

Connecticut Conservation and Development Policies Plan 2025-2030 Draft Update

September 1, 2023

Introduction

- Per CT General Statutes Sect. 16a-28(a), the Office of Policy and Management must submit its initial draft of the 2025-30 Conservation and Development Policies Plan (C&D Plan) to the Continuing Committee by Sept. 1, 2023
- To date, the Office of Responsible Growth (ORG) has focused on actively engaging state agencies in discussion around the role of the C&D Plan, its principles and priorities, and potential new implementation mechanisms
- Broad public engagement sessions planned for late Sept. and early Oct. for further input on new framework and potential vision statements and objectives areas
- Welcome Continuing Committee feedback throughout development of the State C&D Plan

Guiding Principles of the Plan

FIRST DRAFT



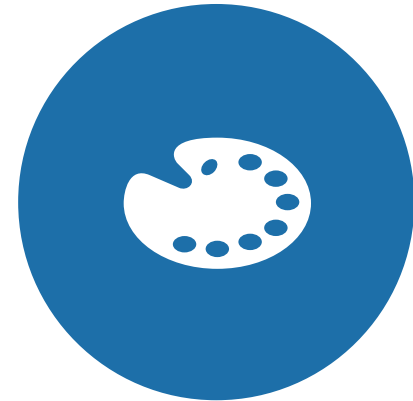
SUSTAINABLE

Balance the ecological, social and economic dimensions of development to meet current needs without compromising the future



EQUITABLE

Ensure a high quality of life for all residents, regardless of income, race, ethnicity, gender, ability or age



VIBRANT

Enhance and maintain diverse, innovative, thriving communities, while preserving unique historic and cultural features

Initial Agency Feedback on Principles

- Resilience should feature more prominently, as sustainability and resiliency are distinct
 - Sustainability focuses on stewardship of resources, including natural, economic, and cultural resources to ensure long-term availability
 - Resiliency focuses on the ability to withstand and thrive through a variety of disruptions (climate change, natural hazards, economic, social, technological, etc.)
- Not enough focus on business and economic side of vibrancy

Guiding Principles of the Plan

POTENTIAL REVISIONS



SUSTAINABLE

Balance the ecological, social and economic dimensions of conservation and development to meet current needs without compromising the future



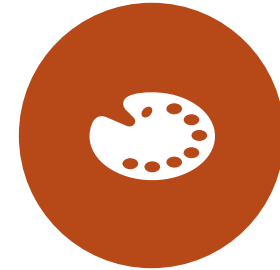
RESILIENT

Develop and maintain the capacity to prepare for, recover from, adapt to, and thrive in changing and disruptive conditions



EQUITABLE

Ensure a high quality of life and opportunity for all residents, regardless of income, race, ethnicity, gender, ability or age



VIBRANT

Enhance and maintain diverse communities and an innovative, thriving economy, while preserving unique historic, natural and cultural features

Guiding Principles of the Plan

POTENTIAL REVISIONS



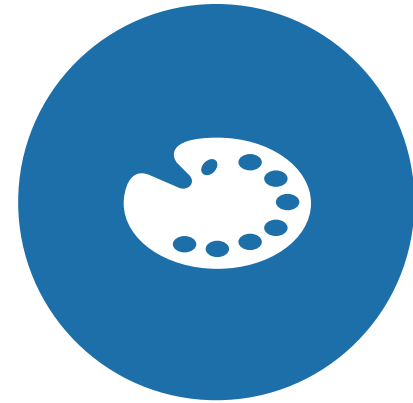
SUSTAINABLE

Balance the ecological, social and economic dimensions of conservation and development to meet current needs and enhance the state's capacity to thrive in the future, with greater resilience to handle disruptions



EQUITABLE

Ensure a high quality of life and opportunity for all residents, regardless of income, race, ethnicity, gender, ability or age



VIBRANT

Enhance and maintain diverse communities and an innovative, thriving economy, while preserving unique historic, natural and cultural features

Vision

Healthy residents and environment

Prosperous economy

Housing to serve current and future residents

Connected communities

Stewardship of resources

A1

VISION: Prosperous Economy

	A	B	C	D
1	VISION: Prosperous Economy			
2				
3	Focus Areas	Potential Data Measures	Source Agency	Notes - Data Location/ Other
4	Economic security	Employment levels	DOL	
5		# of CT manufacturers engaged in supply chains and # of employees in those firms	DECD	
6		TANF and SNAP participation	DSS	
7		Food insecurity	CT Foodshare	Food insecurity mapping
8		Housing and transportation index benchmarking @ MPO level?	htaindex.cnt.org	
9	Business diversity	# of new businesses	DECD	
10		# of new jobs created by sector	DECD/DOL	
11		# of minority-owned businesses	DECD	
12		# of businesses by size	DECD	
13		% of companies retained	DECD	
14	Business persistence	% of companies maintained by sector	DECD	
15				
16	Workforce diversity and career paths	4% annual increase in manufacturing employment	DECD/ DOL	A stated goal in CT's Manufacturing Strategic Plan
17		Expand transit programs for adult education and non-credit bearing workforce training programs - CTpass, Rides for Jobs	DOT	Governor's Economic Action Plan 2021
18		# clean energy jobs	DEEP	2021 Integrated Resources Plan
19		Expand supply of childcare providers	OEC/ DECD	Governor's Economic Action Plan 2021
20		Increase broadband coverage particularly in low-income areas		Governor's Economic Action Plan 2021
21	Neighborhood revitalization	Define geographies - use existing designations(e.g. Opportunity Zones, NRZs, etc., or create and apply new criteria?	OPM/DECD	https://ctoormap.com/
22		Increase in property values in defined geographies?	OPM/DECD	

POTENTIAL REVISIONS

Vision

Healthy people and places

Thriving economy

Housing for current and future residents

Connected and inclusive communities

Resilient resources

Feedback from Agencies

- Value in interagency collaboration
- Significant data collection already occurs, opportunities for better use across agencies
- Need for flexibility to respond to federal mandates and changing conditions
- Opportunity to better guide non-agency decisions

Implementation

- Current law requires consistency for agency plans and projects >\$200,000 and “growth-related” projects to be located in Priority Funding Areas
- Potential changes and alternative mechanisms to foster earlier, meaningful collaboration
 - Increase threshold from \$200,000 and reconsider appropriateness of Priority Funding Areas
 - Regular interagency meetings to share planning activities and seek input around C&D Plan visions
 - C&D Plan “Scorecards”
 - Annual reporting to Continuing Committee focused on how C&D Plan was used in decision-making
 - C&D Plan “clearinghouse:” agency data, plans, program information

Public Workshops

Four planning sessions to
introduce new C&D Plan
framework and expected
planning process

Sept. 21; 2pm

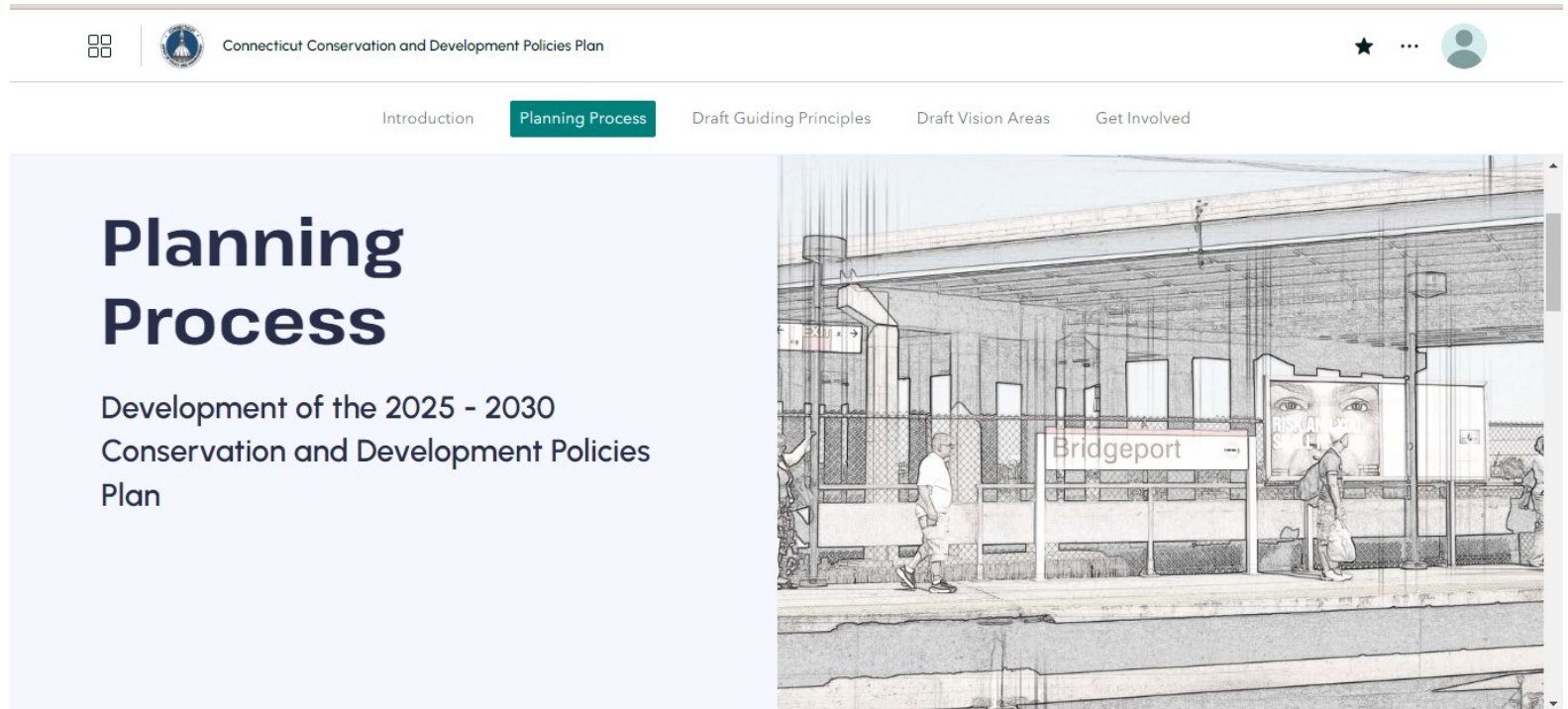
Sept. 26; 6:30pm

Sept. 29; 10am

Oct. 5; 6:30pm

Please spread the word – Committee Chairs, constituent groups

Website



https://bit.ly/OPM_CD_Plan

Next Steps

